

KOMATSU



Solutions

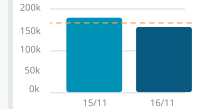
Smart Construction Fleet

Real-time machine movement and productivity reports
for mixed fleet operations

Site Name: Mine Ority Repository

Time Period	15/11/2054 - 16/11/2054
Working Hours	06:00 - 22:00
Reporting Date	16/11/2054
Production volume	11,210,400 (kg)
Productivity	233,577.03 (kg/h)

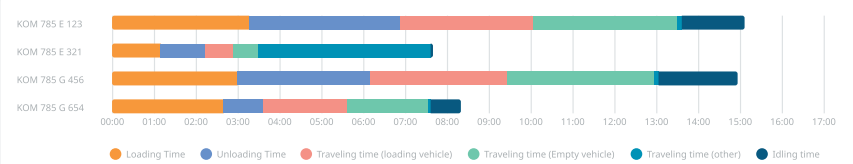
Loading Results	15/11/2054	16/11/2054
Average Cycle Time	11,210,400 kg	+ 6,739,200 kg
Idling Rate	15 min	+3 min
Average Loading Time	12%	13%
Working Time	4 Min	+ 1 Min
	47.99 h	+ 47.99 h



Transportation chart by soil property Monthly (m3)



Working time bar chart by vehicle Daily (hours)



We hope you don't need to use our solution

An automatic productivity report, in a matter of seconds, summarising all site action

Smart Construction Fleet simplifies productivity tracking by consolidating on-site equipment data – cycle times, (un)load performance, idle rates, and more – into a single automated report. With its built-in report builder, you can quickly generate a daily (or weekly) summary that keeps everyone updated. If you're only spending seconds using Fleet, it means everything on-site is running smoothly, and the report reflects that. By eliminating the need for manual note-taking and end-of-day data entry, Fleet streamlines your workflow and helps you stay focused on your project's success.

Remotely monitor day-to-day production across multiple sites

Managing multiple construction or production sites can be challenging, but Fleet makes it simple. With real-time updates and a user-friendly interface, you can stay informed and productive without the need for constant on-site presence.

On-site stock tracking before the weighbridge

Tracking production stockpiles on larger sites can be challenging. Fleet simplifies this by monitoring loads at stockpiles, helping you adjust production schedules based on orders and real-time site output.

Stay updated on subcontractor productivity

Subcontractors play a crucial role in growing your business, but keeping track of their work shouldn't be a hassle. With Fleet, you can monitor their progress in seconds and provide clear instructions to keep everything on track.

If the built-in report builder doesn't meet your needs, Fleet offers complete transparency. Export raw data from the platform and create tailored reports using your preferred software.

A productivity and performance overview, live and historical

When the report shows unexpected data, it's time to investigate the root cause. With Fleet, you can dissect day-by-day, cycle-by-cycle, and machine-by-machine. No information is hidden, and we give you easy-to-access information panels to dig deep into the details.

Loading and unloading performance

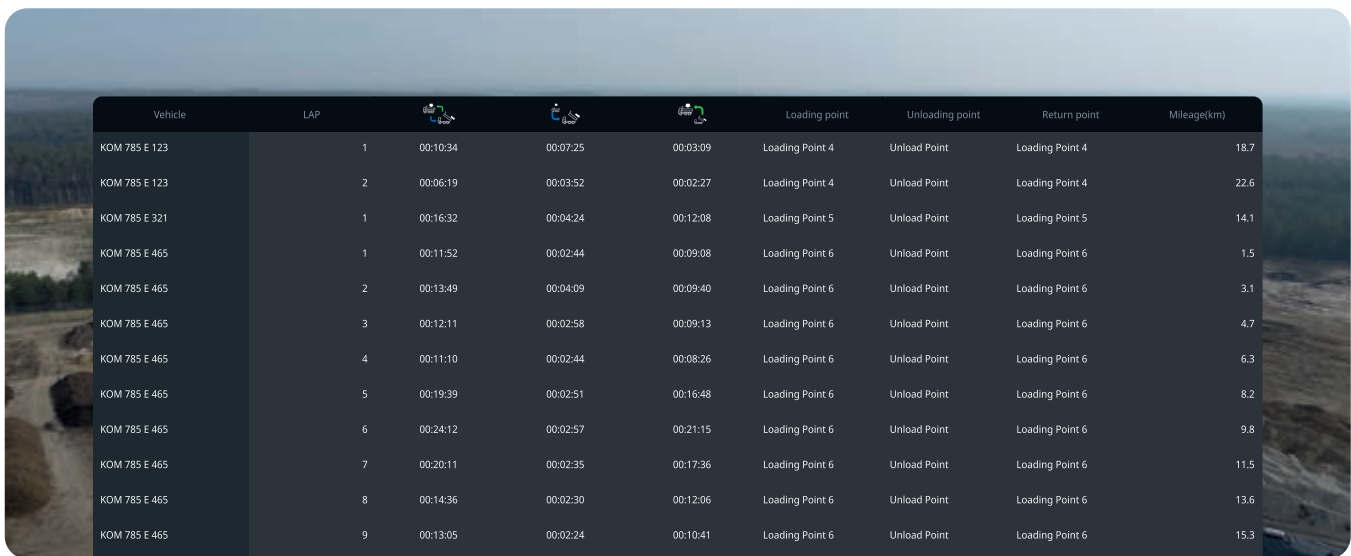
Monitor the number of loading and unloading cycles by point or vehicle, giving you clear visibility into work progress.

Cycle time

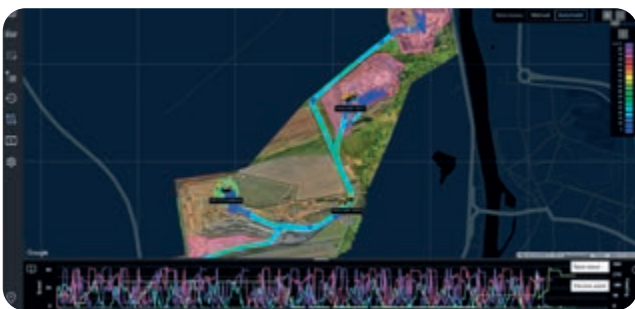
Monitor cycle times for loading and unloading by point or vehicle, allowing you to estimate daily work volume.

Operational vehicle daily report

Access the driving history and detailed work data for each operating vehicle.



Vehicle	LAP				Loading point	Unloading point	Return point	Mileage(km)
KOM 785 E 123	1	00:10:34	00:07:25	00:03:09	Loading Point 4	Unload Point	Loading Point 4	18.7
KOM 785 E 123	2	00:06:19	00:03:52	00:02:27	Loading Point 4	Unload Point	Loading Point 4	22.6
KOM 785 E 321	1	00:16:32	00:04:24	00:12:08	Loading Point 5	Unload Point	Loading Point 5	14.1
KOM 785 E 465	1	00:11:52	00:02:44	00:09:08	Loading Point 6	Unload Point	Loading Point 6	1.5
KOM 785 E 465	2	00:13:49	00:04:09	00:09:40	Loading Point 6	Unload Point	Loading Point 6	3.1
KOM 785 E 465	3	00:12:11	00:02:58	00:09:13	Loading Point 6	Unload Point	Loading Point 6	4.7
KOM 785 E 465	4	00:11:10	00:02:44	00:08:26	Loading Point 6	Unload Point	Loading Point 6	6.3
KOM 785 E 465	5	00:19:39	00:02:51	00:16:48	Loading Point 6	Unload Point	Loading Point 6	8.2
KOM 785 E 465	6	00:24:12	00:02:57	00:21:15	Loading Point 6	Unload Point	Loading Point 6	9.8
KOM 785 E 465	7	00:20:11	00:02:35	00:17:36	Loading Point 6	Unload Point	Loading Point 6	11.5
KOM 785 E 465	8	00:14:36	00:02:30	00:12:06	Loading Point 6	Unload Point	Loading Point 6	13.6
KOM 785 E 465	9	00:13:05	00:02:24	00:10:41	Loading Point 6	Unload Point	Loading Point 6	15.3



Travel history

Once you've identified the root cause, you may need to replay events to fully understand the issue. With Fleet, you can select specific machines and choose the data you want to investigate – whether it's orientation, speed, or load points. Replay actions on a day-by-day basis to get a clearer view of the situation.



Live site overview

Identifying and resolving errors or bottlenecks is one thing; ensuring your operators act on the feedback is another. With Fleet, you can have a live site overview displayed on the big screen, allowing you to monitor your production site without leaving your chair. This feature also provides a comprehensive view of the site context during phone conversations with operators.

Set the stage and command your site

Getting started with Smart Construction Fleet is quick and intuitive. Begin by configuring basic site details such as location, operating hours and shifts, and soil types for specific load points, ensuring a more tailored setup. Once these core details are in place, define what qualifies as a load or unload – this step benefits from on-site experience to fine-tune accuracy.

Next, add the machines in use, whether on-road, off-road, or supportive equipment. Accurate input of capacity, weight, and other specifications is crucial, as it directly improves the quality of the system's automatically generated reports. With everything set, you're ready to optimize efficiency on-site.



Load and unload points

Define load and unload zones quickly and easily, assigning soil types to enhance data collection. With a continuously moving excavator as the load area, the load zone follows seamlessly.

Mobile only feature

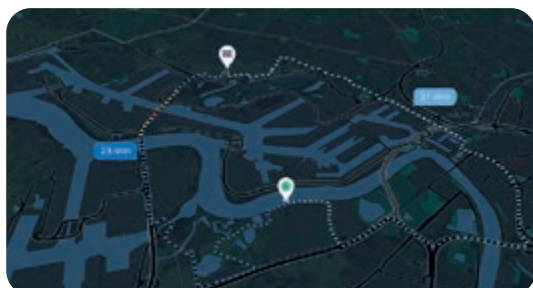
Approach gates

Install approach gates to give your operators a heads-up. These geofences automatically send a message to the equipment operators when a machine passes through. Perfect for managing haul road bottlenecks.

Mobile only feature

Extra attention required

Assign geofences across the site to indicate speed restrictions, general alerts, or no-go zones. A text-to-speech message will be communicated to operators upon entry, ensuring safety and compliance.



Mobile only feature

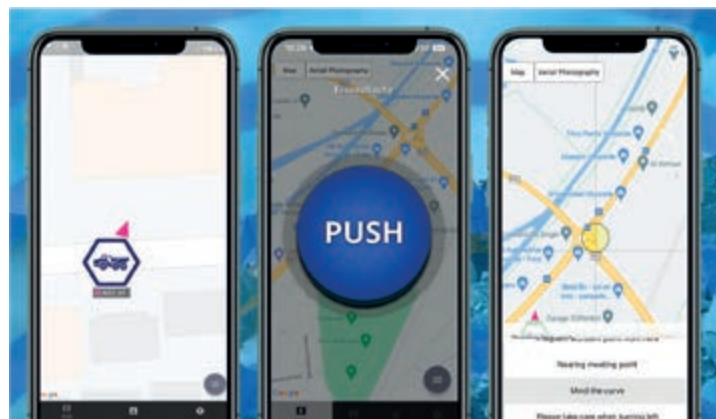
Haul route navigation

On sites where the haul road is part of the public road network, it's beneficial to create an optimized path between load and unload points. For projects with limits on the number of times a public road can be used, the app is the perfect solution to communicate and accommodate strict haul road planning.

Fleet running according to your company policy. Installed in seconds in your machine

Our mythical Blackbox connected to your machine's battery

Some of our customers prefer the Blackbox solution, directly connected to the machine's battery. It adds no distracting screens to the cabin and no cables that could be accidentally disconnected by the operator. It captures all the core data Fleet needs to calculate and measure key data points, providing you with the information that matters most. Installation takes just seconds, whether done by one of our service providers or yourself, with the rest of the setup completed remotely, ensuring virtually zero downtime for your operations.



Unlock a broader feature set with Fleet on your mobile device

For businesses that provide company phones to employees, the Fleet mobile app enhances functionality by capturing both automatic data and operator input. While our system is smart at detecting load and unload points, it doesn't have eyes. If you need additional details, like assigning a soil type being transported, the operator can easily add this information to the data.



Mobile features

Tap into the back camera to inspect the current location or identify ongoing issues, like a traffic jam.

Send a spoken message directly to the operator through the speakers, avoiding distractions like text messages.

Alerts and warnings can be issued if the operator surpasses the allowed speed limit or enters a restricted zone.

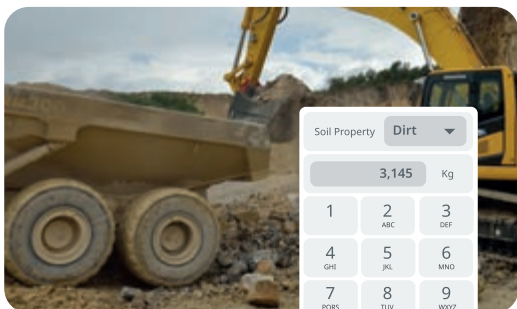
Site administrators can define an optimized route and distribute it to operators.

Ready to make the switch? Move software without stopping your equipment

Already invested in hardware for data collection? Our team can assess your current setup and determine if your existing hardware can be reconfigured to share

data with Fleet. Get in touch, and we'll help you make a smooth transition!

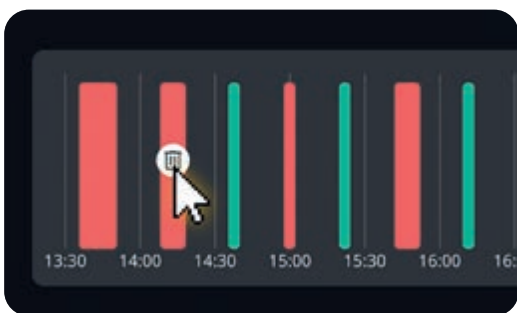
We've thought of everything – so you don't have to



Mobile only feature

Payload logging

Fleet's quick setup skips CAN bus integration, so onboard payload meters aren't connected. However, operators can manually log payload figures into the app. This ensures that valuable data, previously written down manually, is now digitized and readily available for analysis.



Robust anti-miscounting

Fleet's powerful anti-miscounting features ensure accurate notation of load and unload data. If irregularities do arise, errors can be quickly identified and corrected – a function designed for occasional use.



Simplicity for your mixed fleet

Although this is a Komatsu brochure, Fleet is completely brand-agnostic – just like your site. We understand that a productivity solution must work seamlessly across all equipment brands to be truly effective in the real world.



Recalculation of historical data

Construction site management often involves quick problem-solving, and sometimes the site and Fleet may fall out of sync. Started extracting in a new area but forgot to assign it as a load point? No problem – update the settings, and Fleet will recalculate. Your data and reports will be instantly corrected.

Your Komatsu partner:

KOMATSU

[komatsu.eu](https://www.komatsu.eu)

